

- 1
- 2
- 3
- 4
- 5
- 6
- 7
- 8
- 9
- 10
- 11
- 12
- 13
- 14
- 15
- 16
- 17
- 18

MATERIAL

Aluminium, matte finish.
AISI 304 stainless steel screws and nuts.

STANDARD EXECUTIONS

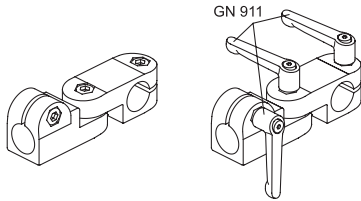
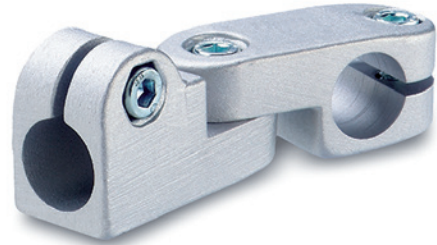
Surface finish index:
- **BL**: natural colour.
- **SW**: epoxy resin coating resistant to UV rays, RAL 9005 black colour.

FEATURES AND APPLICATIONS

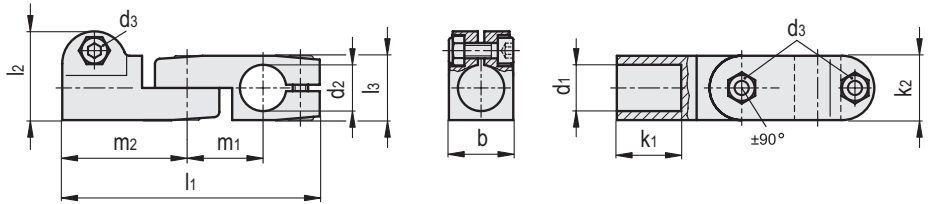
The assembly hole of GN 287 connecting clamps allows an excellent match with tubes GN 990 (see page 1368).
GN 287 connecting clamps are an assembly of connecting clamps GN 275 (see page 1346) and GN 277 (see page 1347).
The clamping screws d3 may be replaced by clamping kits GN 911 (see page 1372).

SPECIAL EXECUTIONS ON REQUEST

Different combinations of holes d1/d2.



Conversion Table	
1 mm = 0.039 inch	
d1	
mm	inch
12	0.47
14	0.55
16	0.63
18	0.71



GN 287-BL

METRIC

Code	Description	b	d1	d2	d3	k1	k2	l1	l2	l3	m1	m2	d3 Clamping kit	△
GN.64611	GN 287-B12-B12-2-BL	25	12	12	M6	25	25	100	34.5	25	29.5	48.5	GN 911-M6-22	145
GN.64631	GN 287-B14-B14-2-BL	25	14	14	M6	25	25	100	34.5	25	29.5	48.5	GN 911-M6-22	130
GN.64651	GN 287-B16-B16-2-BL	25	16	16	M6	25	25	100	34.5	25	29.5	48.5	GN 911-M6-22	130
GN.64671	GN 287-B18-B18-2-BL	25	18	18	M6	25	25	100	34.5	25	29.5	48.5	GN 911-M6-22	130

GN 287-SW

METRIC

Code	Description	b	d1	d2	d3	k1	k2	l1	l2	l3	m1	m2	d3 Clamping kit	△
GN.64616	GN 287-B12-B12-2-SW	25	12	12	M6	25	25	100	34.5	25	29.5	48.5	GN 911-M6-22	145
GN.64636	GN 287-B14-B14-2-SW	25	14	14	M6	25	25	100	34.5	25	29.5	48.5	GN 911-M6-22	130
GN.64656	GN 287-B16-B16-2-SW	25	16	16	M6	25	25	100	34.5	25	29.5	48.5	GN 911-M6-22	130
GN.64676	GN 287-B18-B18-2-SW	25	18	18	M6	25	25	100	34.5	25	29.5	48.5	GN 911-M6-22	130